



INDOFINE Chemical Company, Inc.

121 Stryker Lane, Bldg. 30, Suite 1 • Hillsborough, NJ 08844 • U.S.A.

Phone: (908) 359-6778 • FAX: (908) 359-1179

website: www.indofinechemical.com

e-mail: chemical@indofinechemical.com

CERTIFICATE OF ANALYSIS

Catalog Number: **19-380**

Product Name: **8-CHLOROFLAVANONE**

CAS Number: [66883-86-1]

Lot Number: 0509076

Chemical Formula: C₁₅H₁₁ClO₂

Molecular Weight: 258.71

Melting Point: 58-60°C

Appearance: White crystals

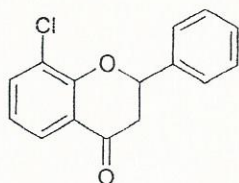
Solubility: Soluble in Chloroform

TLC: n-Hexane : Ethyl acetate (8:2)

NMR Spectrum: Enclosed (conforms to the structure)

Storage: Store in a cool, dry place

Purity (HPLC): 99.85%





INDOFINE Chemical Company, Inc.

121 Stryker Lane, Bldg. 30, Suite 1 • Hillsborough, NJ 08844 • U.S.A.

Phone: (908) 359-6778 • FAX: (908) 359-1179

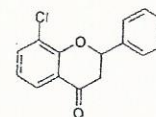
website: www.indofinechemical.com

e-mail: chemical@indofinechemical.com

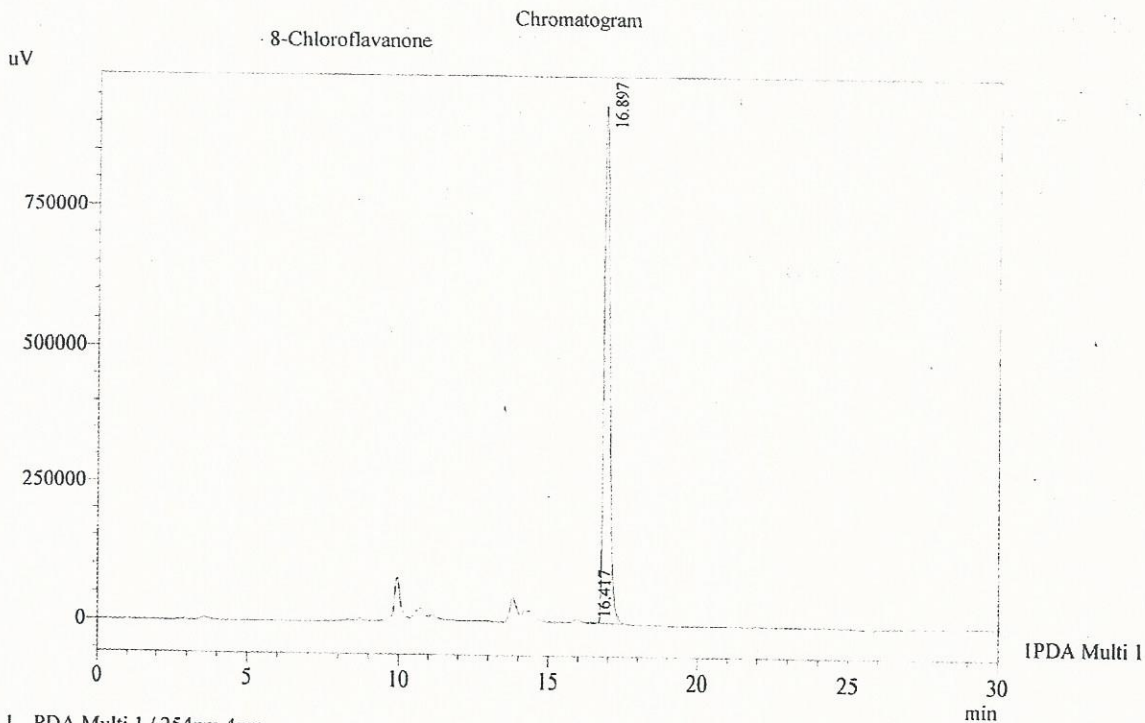
HPLC ANALYSIS

Acquired by : Admin
Sample Name : 8-Chloroflavanone
Sample ID : Lot no:509076
Injection Volume : 20 uL
Data Filename : 160615C.lcd
Method Filename : Linear Gradient.M.lcm

Catalog No.: 19-380
Product Name: 8-Chloroflavanone
Lot No.: 0509076



Column : Gemini C-18, 150mm x4.6mm 5.0µ
Flow : 1.000 mL/min.
Mobile Phase : A(0.05% TFA in Water) B(Acetonitrile)
0.01 90 10
12.0 10 90
20.0 10 90
23.0 90 10
30.0 90 10
Diluent : Acetonitrile



I PDA Multi 1 / 254nm 4nm

PeakTable

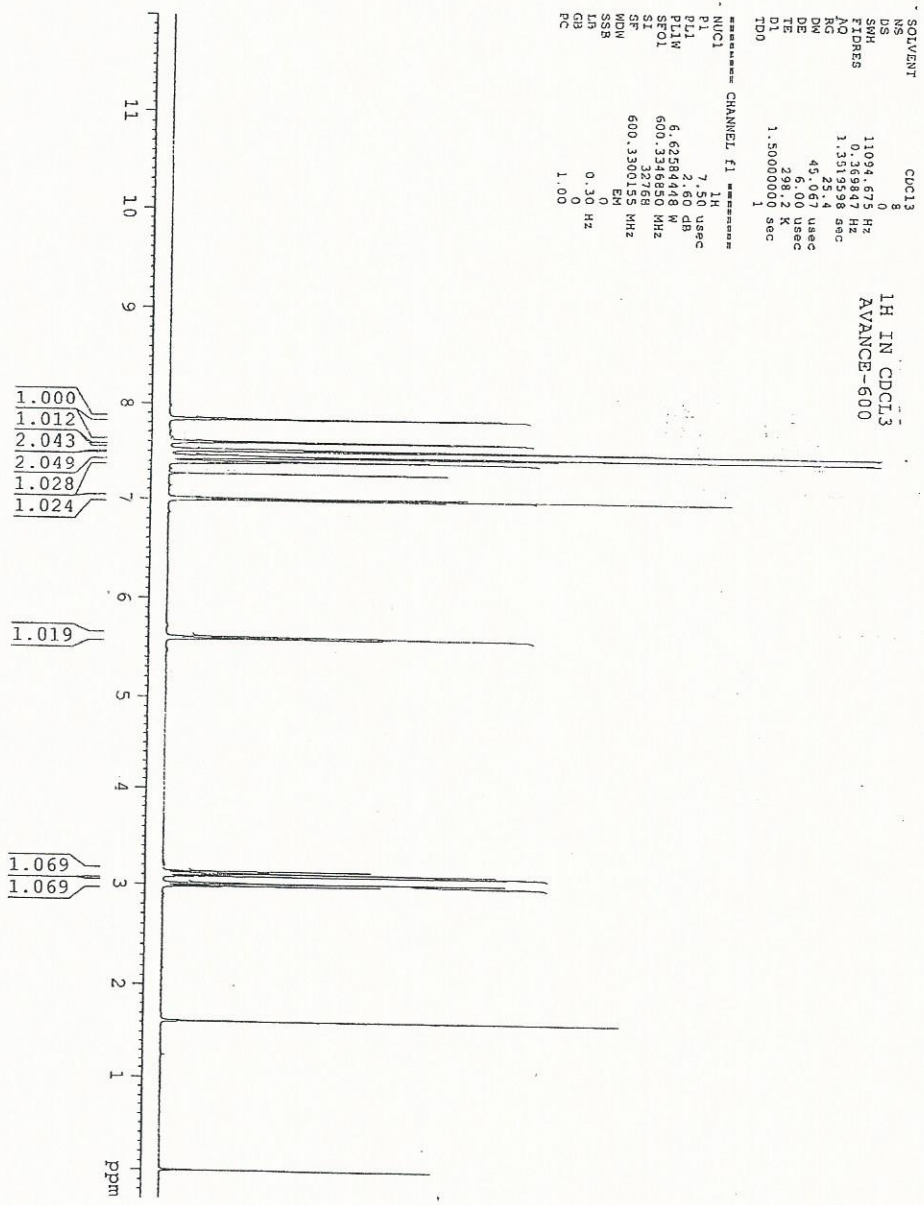
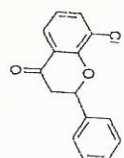
PDA Ch1 254nm 4nm

Peak#	Name	Ret. Time	Area	Area %	Relative Retention Time
1	RT:16.417	16.417	18937	0.15	0.97
2	8-Chloroflavanone	16.897	12695098	99.85	1.00
Total			12714036	100.00	



INDOFINE Chemical Company, Inc
121 STRYKER LANE
BLDG. 30, SUITE 1
HILLSBOROUGH, NJ 08844

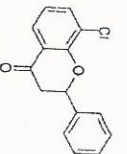
Catalog No.: 19-380
Product Name: 8-Chloroflavanone
Lot No.: 0509076





INDOFINE Chemical Company, Inc.
 121 STRYKER LANE
 BLDG. 30, SUITE 1
 HILLSBOROUGH, NJ 08844

Catalog No.: 19-380
 Product Name: 8-Chloroflavanone
 Lot No.: 0509076



SOLVENT CDCl₃
 NS 8
 DS 11094.678 Hz
 SMH 0.369847 Hz
 FIDNES 1.3519598 sec
 R2 25.4
 DW 45.067 usec
 DE 5.00 usec
 TE 298.2 K
 DI 1.5000000 sec
 ID0 1

***** CHANNEL f1 *****
 NUCL1 1H
 PI 7.50 usec
 PL1 2.60 dB
 PL1W 6.62584408 M
 SF01 600.3369520 MHz
 SI 600.3369520 MHz
 SFO 600.3369520 MHz
 SSB 0
 CB 0.30 Hz
 LB 0
 PC 1.00

1H IN CDCl₃
 AVANCE-600

